

EHBLASR

Adjustable Linear High Bay Sensor Ready Lumens & Kelvin Selectable

HOUSING

- Premium powder-coat, steel, white housing.

ELECTRICAL

- Operating temperature (ambient): -40°C to 50°C (-40°F to 122°F) .
- Universal 120-277V AC voltage (50-60Hz) is standard.
- Optics rotate up to 135°.
- Screw in sensor ready. (Sensor and remote control sold separately).
- Emergency driver option available.
- 347-480v achieved with step-down transformer.
- 0-10VDC dimming drivers are standard.
- Input transient surge protection = 6kV.
- PF > 0.9; THD < 20%.

OPTICAL SYSTEM

- Polycarbonate lens.
- Field Selectable 4000k (neutral white) and 5000k (cool white) color temperatures*.
- Tri-Lumens selectable delivers 9,000 to 30,000 nominal lumens (see lumen tables on page 3)**.
- Remote Control required to change factory sensor settings (see default settings on page 2).
- Long-life LEDs provide 148,000 hours of operation with at least 70% of initial lumen output (L70), and 44,000 hours with at least 90% of initial lumen output (L90)**.
- LED color maintenance < 0.0035 chromaticity shift ($\Delta u'v'$) over the initial 6,000 hours of operation.
- Color rendering index > 80%.

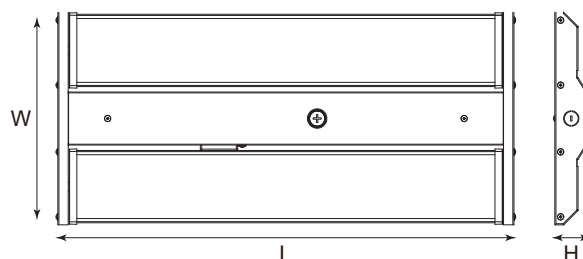
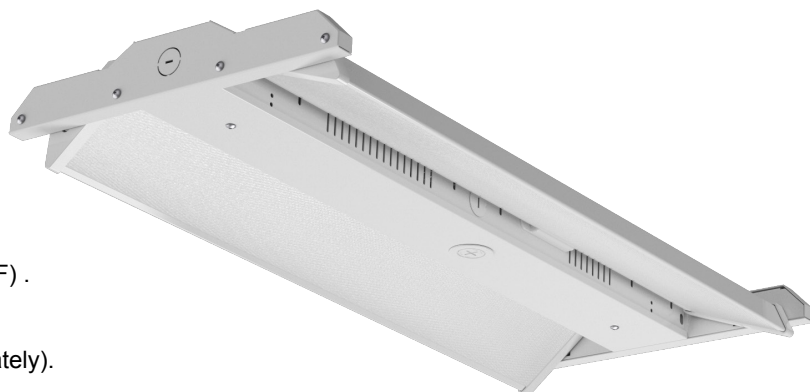
* Default kelvin temperature = 4000k.

** Default power setting = highest lumen output. ***L70 & L90 hours are IES TM-21-11 calculated hours.

MOUNTING

- Chain-mount kit (includes v-hooks , 1-meter long chain) are standard.
- Optional surface mounting kit provides attachment to solid surfaces*.
- Optional pendant mounting kit provides pendant attachment to 1/2" rigid conduit.

* Surface mount kit and Pendant mount kit are not compatible with the UNC StepDown Transformer option, nor the on-board, factory installed EM driver options.



Model #	L (in)	W (in)	H (in)	Weight (lbs)
EHBLASR-15129L-4K5K	25.8	12.1	1.9	7.5
EHBLASR-241815L-4K5K	25.8	12.1	1.9	7.5
EHBLASR-302418L-4K5K	25.8	12.1	1.9	7.5

CODE COMPLIANCE

- cULus listed for damp locations.
- DLC Premium listed.
- Complies with FCC part 15, class A.

WARRANTY

- 5 year warranty on all electronics and housing.

STANDARDS



ORDERING INFORMATION Example: EHBLASR-15129L-4K5K

Series	Nominal Lumen Output (Selectable)		Kelvin Selectable	Input Voltage	Emergency Driver
	15129L	15,000 / 12,000 / 9,000			
EHBLASR	241815L	24,000 / 18,000 / 15,000	4K5K	UNC* 347-480V Blank 120-277V	EM10 10W Emergency Driver EM13 13W Emergency Driver EM25 25W Emergency Driver Blank No Emergency Driver
	302418L	30,000 / 24,000 / 18,000			

REPLACES THE EHBLA

* UNC option not Compatible with Emergency Drivers

ACCESSORIES (ORDER SEPARATELY)

Sensor:

- HD07VR-PH-1 = Passive infrared sensor - maximum mounting height = 39FT,
 factory settings: detection area = 100%, hold time = 5 sec, stand-by period = 0 sec,
 stand-by dimming level = 10%, daylight threshold = disabled
- HD07VR-MH-B-1 Microwave step-dimming sensor - maximum mounting height = 49FT,
 factory settings: detection area = 100%, hold time = 5 sec, stand-by period = 0 sec, stand-by
 dimming level = 10%, daylight threshold = disabled
- HD05R = Remote control for HD07VR-PH-1 & HD07VR-MH-B-1 (required to change factory setting)

Wire Guard:

- EHBLASR-WGK-24x4 = WIRE GUARD FOR ALL EHBLASR MODELS

Mounting Option:

- EHBLASR-SMK = SURFACE MOUNT KIT FOR ALL EHBLASR MODELS* PENDANT MOUNT KIT FOR
 EHBLASR-PMK = ALL EHBLASR MODELS*

* SMK and PMK not compatible with UNC and EM drivers.

Remote Mount EM Drivers:

- BLEM-CP-10C = 10W EMERGENCY DRIVER WITH CONDUIT - EM10
 BLEM-CP-13C = 13W EMERGENCY DRIVER WITH CONDUIT - EM13

LUMEN TABLES)

Series	Measurements	Low Lumens		Mid Lumens		High Lumens	
		4000k	5000k	4000k	5000k	4000k	5000k
EHBLASR-15129L-4K5K	Lumens	9,935	9,886	12,681	12,531	15,819	15,495
	Watt	63.9	64.9	83.2	85.0	106.7	109.4
	Efficac	155	152	152	147	148	142

Series	Measurements	Low Lumens		Mid Lumens		High Lumens	
		4000k	5000k	4000k	5000k	4000k	5000k
EHBLASR-241815L-4K5K	Lumens	15,038	15,043	17,959	17,769	23,645	23,141
	Watt	95.21	96.61	115.38	117.13	157.28	160.36
	Efficac	158	156	156	152	150	144

Series	Measurements	Low Lumens		Mid Lumens		High Lumens	
		4000k	5000k	4000k	5000k	4000k	5000k
EHBLASR-302418L-4K5K	Lumens	19,469		25,457		31,090	
	Watt	120.8		162.5		205.3	
	Efficac	161		157		151	

ELECTRICAL DATA

Series	CCT	Input Amps (A)								
		Low Lumens			Mid Lumens			High Lumens		
		120V	240V	277V	120V	240V	277V	120V	240V	277V
EHBLSR-15129L-4K5K	4000k	0.53	0.27	0.23	0.69	0.35	0.30	0.89	0.44	0.39
	5000k	0.54	0.27	0.23	0.71	0.35	0.31	0.91	0.46	0.39

Series	CCT	Input Amps (A)								
		Low Lumens			Mid Lumens			High Lumens		
		120V	240V	277V	120V	240V	277V	120V	240V	277V
EHBLSR-181512L-4K5K	4000k	0.79	0.40	0.34	0.96	0.48	0.42	1.31	0.66	0.57
	5000k	0.81	0.40	0.35	0.98	0.49	0.42	1.34	0.67	0.58

Series	CCT	Input Amps (A)								
		Low Lumens			Mid Lumens			High Lumens		
		120V	240V	277V	120V	240V	277V	120V	240V	277V
EHBLSR-302418L-4K5K	4000k	1.01	0.50	0.44	1.35	0.68	0.59	1.71	0.86	0.74
	5000k	1.02	0.51	0.44	1.38	0.69	0.60	1.75	0.87	0.76

PHOTOMETRICS

EHBLSR-15129L-4K5K

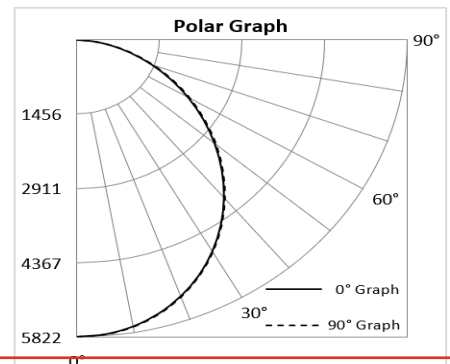
Luminaire Data

Description	Adjustable High Bay Lumen/Kelvin Selectable
Total Lumens	15,495
Input Wattage	109
Efficacy (lm/W)	142
Spacing Criterion (0-180°)	1.24
Spacing Criterion (90-270°)	1.24

Photometrics calculated at 5000k - high lumens setting

Zonal Lumen Summary

Zone	Lumens	%Fixt
0-20°	2,114	13.6%
0-30°	4,449	28.7%
0-40°	7,199	46.5%
20-50°	7,851	50.7%
40-70°	6,974	45.0%
0-60°	12,380	79.9%
0-80°	15,208	98.2%
0-90°	15,495	100.0%
90-180°	0	0.0%
0-180°	15,495	100.0%



EHBLSR-241815L-4K5K

Luminaire Data

Description	Adjustable High Bay Lumen/Kelvin Selectable
Total Lumens	23,141
Input Wattage	160
Efficacy (lm/W)	144
Spacing Criterion (0-180°)	1.24
Spacing Criterion (90-270°)	1.22

Photometrics calculated at 5000k - high lumens setting

Zonal Lumen Summary

Zone	Lumens	%Fixt
0-20°	3,112	13.4%
0-30°	6,559	28.3%
0-40°	10,633	45.9%
20-50°	11,637	50.3%
40-70°	10,444	45.1%
0-60°	18,367	79.4%
0-80°	22,662	97.9%
0-90°	23,111	99.9%
90-180°	30	0.1%
0-180°	23,141	100.0%

